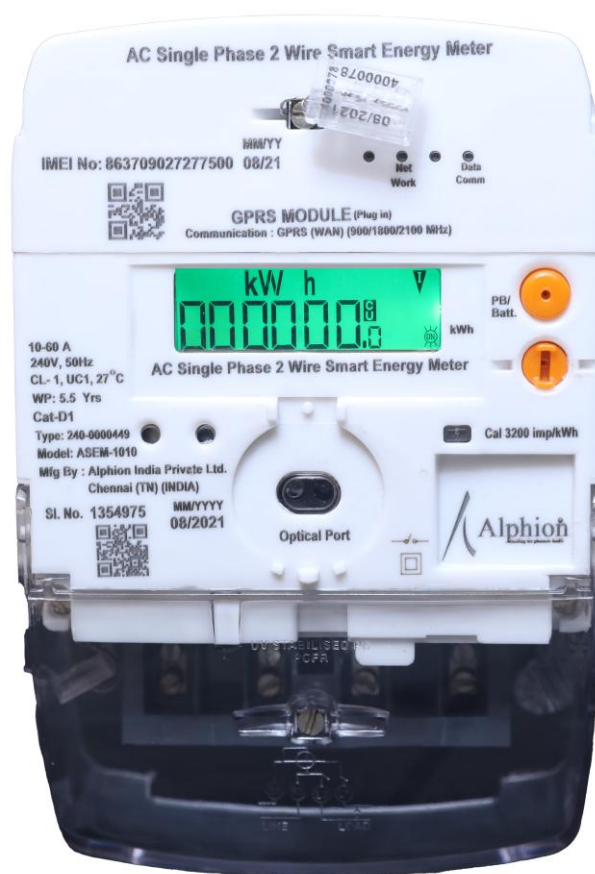


ASEM-1010

Single Phase, 2 Wire Smart Energy Meter

Technical Specifications:

Description	Details
Voltage Rating (P-N)	240VAC
Frequency	50 Hz \pm 5%
Current Rating	10A ~60A /5-30A
Type of meter	Direct/whole current
Load Switch	Built-in Type (UC1)
Power Consumption	
In voltage Circuit	Less than 5W in WAN module IDLE mode/ Less than 7W in WAN module Transmission mode. Apparent power <15VA
In Current circuit	Apparent power <11.04VA
Class of accuracy	Class 1.0 IS16444 part1
Type of Display	LCD with backlight
Communication	WAN Communication-Cellular (Plug-in type module) – 2G/3G/4G or NBIoT Local : Optical port
Data Exchange	DLMS Category D1
Billing Profile	13 Months (12-history+1- current) Cycle: Monthly
TOD	4 time of day
Meter constant	3200 imp/KWh
Tampering detection	<ul style="list-style-type: none"> Top cover open Neutral missing Magnet Current reverse Neutral disturbance



Standards:

Description	Details
Electrical & physical standard	IS 16444 Part-1 / IS 13779 :2020
Communication Layer Protocol	IS 16444 Part 1/ IS 15959 part1 and IS15959 Part2

ASEM-1010 Product Brief

Physical parameters

Dimension (HxWxD) :	194mm*129mm*74mm
Material :	Polycarbonate
Weight :	0.8Kg \pm 0.1Kg.
Seals :	Base to Top cover & Communication module
Terminals :	4 (Phase In, Neutral In, Neutral Out, Phase Out) – Barrel Type
Mounting :	Wall mounting holes (one at the top and two at the bottom)

Environmental

IP Rating :	IP51
Operating Temp. :	-10 to 55°C
Storage :	-25 to 70°C
Humidity :	Upto 95% RH

Display Parameters

Type :	LCD with Backlight
Size :	10mm*5mm
Digits :	6+1digits for Energy Registers
High Resolution :	2+4 (2 – before decimal, 4 – after decimal) Digits

Load Survey

- ❖ Load Survey 20 days with 15min IP & 40 days with 30min IP
- ❖ load Survey Integration period
- ❖ The time stamp - at the end of the Capture period
- ❖ Load Profile Parameter
- ❖ Real time clock, date and time
- ❖ Average Voltage

- ❖ Block energy, kWh (Import)
- ❖ Block energy, kWh(Export)
- ❖ Block energy, kVAh (Import)
- ❖ Block energy, kVAh (Export)
- ❖ Average Current
- ❖ Daily Load Profile Parameters
- ❖ Daily Load profile Days
- ❖ Real time clock, date and time
- ❖ Cumulative energy kWh (Import)
- ❖ Cumulative energy, kWh (Export)
- ❖ Cumulative energy, kVAh (Import)
- ❖ Cumulative energy, kVAh (Export)

Programmable Parameters

- ❖ Real time clock — Date and time
- ❖ Demand integration period
- ❖ Profile capture period
- ❖ Single-action schedule for billing dates
- ❖ Activity calendar for time zones
- ❖ Load Limit (kW)
- ❖ Enable /Disable load limit function
- ❖ Image transfer activation single schedule
- ❖ Global key change
- ❖ MD reset
- ❖ Critical tamper-push
- ❖ Over voltage
- ❖ Low voltage
- ❖ Over current
- ❖ Earth loading
- ❖ Influence of permanent magnet or ac/dc electromagnet
- ❖ Neutral disturbance-HF, dc or alternate method
- ❖ Meter cover open

The information contained herein is for informational purposes only. Technical claims listed depend on various technical assumptions. Your experience with these products may differ if you operate the products in an environment which is different from the technical assumptions. Alphion reserves the right to modify these specifications without any prior notice. Alphion makes no warranties, expressed or implied, on the information contained in this document.